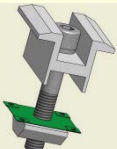
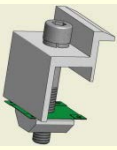
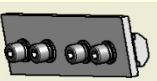
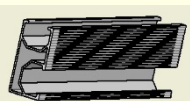




L-foot-Tin Roof PV Mounting System

Product Features:

1. Extremely low cost solution;
2. Fewer components. Modular design, all the parts are prefabricated in factory. So only 6 components needed to be assembled in the field. See left pictures ;
3. Fewer tools needed. Highly standardized. Only simple tools needed. About 3 tools. See right pictures.



Product Specification:

1. Roof Type: tin roof, asphalt shingle roof
2. Material: Al6005 and SS304;
3. PV Type: major brand PV module with or without frame;
4. Module Orientation: portrait or landscape;
5. Surface: B, C
Roughness:
6. Wind Speed: $\leq 60\text{m/s}$;
7. Snow Load: $\leq 1.4\text{KN/m}^2$;
8. Tilt Angle: flush with roof top;
9. Average Distributed Weight: 0.27PSF (PV excluded)

Shanghai Ecopro Technology Co., Ltd.
 Tel : +86 21 53935509
 Email: sales@ecopro-tech.com
www.ecopro-tech.com